

# SPIDER 20.95

SELF-PROPELLED AERIAL WORK PLATFORMS

PROVISIONAL

## TECHNOLOGY & PERFORMANCES THAT DON'T FEAR ABOUT COMPARISONS.....

- Extra light & easy to tow by light trailers.
- 250 kg basket capacity with no side outreach restrictions
- Excellent up and over
- Automatic stabilization and automatic go home
- Electric or Hybrid version available on demand. Lithium/ion tech on demand.
- Radio remote control unit for drive and stabilization. (supplied with spare battery, charger and 5m cable for emergency purpose)
- Hoses and pipes are all routed inside of the tele-booms.
- Fully protected against fall of objects
- Air/water and 230Vac outlets inside of the basket.
- Multifunctions and proportional speed of the aerial movements.
- Diagnostic display fitted on board.
- 



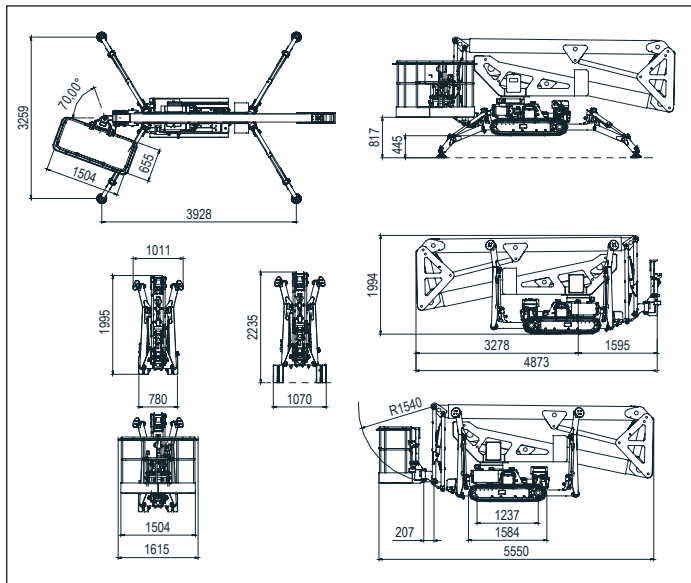
# PLATFORM

B A S K E T

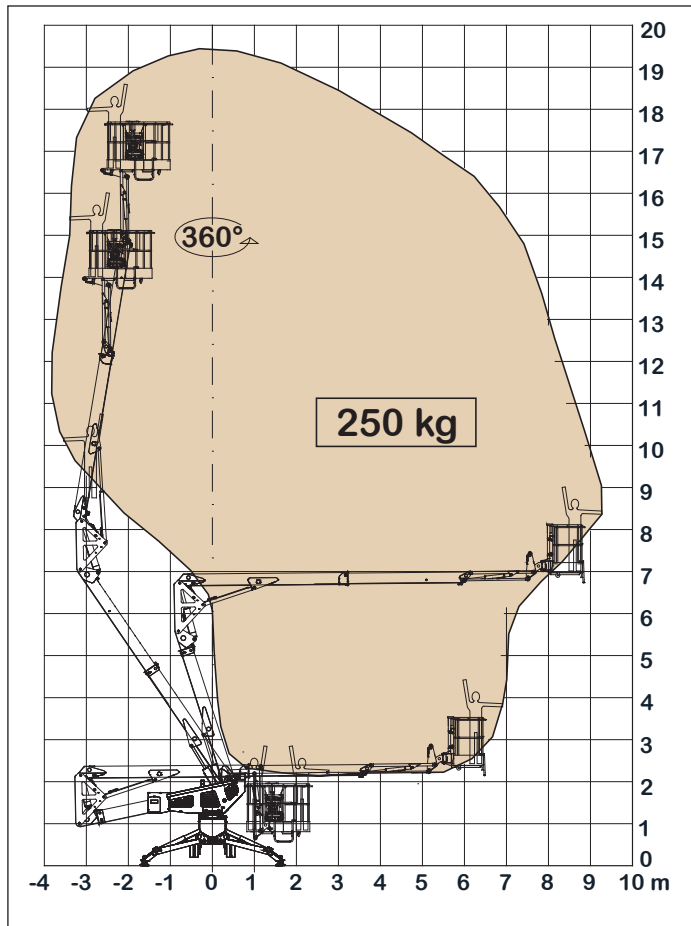
RAISING THE STANDARDS

# SERIE SPIDER 20.95

## OVERALL DIMENSIONS



## WORKING ENVELOPE



### STD

- Combustion engine
- Electric motor-pump single phase 230/110 Vac

### E - ELECTRIC

- Electric motor-pump single phase 230/110 Vac
- Electric pump 24Vdc with deep cycle battery

### ED - HYBRID

- Combustion engine
- Electric pump 24Vdc with deep cycle battery

| TECHNICAL DATA                                   |         | VERSION     |           |           |
|--|---------|-------------|-----------|-----------|
|  |         | STD         | E         | ED        |
| Max working height                               | m       | 19,40       |           |           |
| Max height basket floor                          | m       | 17,40       |           |           |
| Max side outreach                                | m       | 9,50        |           |           |
| Rotation angle                                   | °       | 400         |           |           |
| Basket size (standard version)                   | m       | 1,50 x 0,70 |           |           |
| Basket rotation angle                            | °       | 70+70       |           |           |
| Max basket capacity (2 men)                      | Kg      | 250         |           |           |
| Length in stowed position (with detached basket) | m       | 5,55        |           |           |
| Min width in stowed position                     | m       | 0,79        |           |           |
| Min height in stowed position                    | m       | 1,99        |           |           |
| Stabilization foot-print                         | m       | 3,25 x 3,92 |           |           |
| Max gradeability                                 | deg / % | 20° (36%)   |           |           |
| Max side gradeability                            | deg / % | 17° (31%)   |           |           |
| Max speed  | Km/h    | 1,50        | 0,80      | 1,50      |
| Double drive speed (Optional)                    | Km/h    | 2,70        | 1,50      | 2,70      |
| WEIGHTS  |         | STD         | E         | ED        |
| Weight in working config.*                       | Kg      | 2700*       | 2750*     | 2850*     |
| Ground pressure stowed machine                   | KN/m²   | 5,50        | 5,55      | 5,70      |
| Ground pressure when on stab.                    | KN/m²   | 1,96        | 1,98      | 2,09      |
| Max point load                                   | KN      | 18,90       | 19,20     | 19,60     |
| POWER  |         | STD         | E         | ED        |
| Engine iGX390 Honda                              | hp/rpm' | 11,7/3600   | -         | 11,7/3600 |
| Engine Z482 Kubota (optional)                    | hp/rpm' | 11/3200     | -         | 11/3200   |
| Electric motor 230 Vac                           | hp/KW   | 3 / 2,2     | 3 / 2,2   | -         |
| Electric motor 24 Vdc                            | hp/KW   | -           | 5,4 / 4,0 | 5,4 / 4,0 |
| 24Vdc lead/acid                                  | Ah      | -           | 200       | 150       |
| 24Vdc lithium-ion (Optional)                     | Ah      | -           | 300       | 200       |
| Battery charger - lead/ battery                  | Ah      | -           | 45        | 45        |
| Battery charger - Lithium-ion                    | Ah      | -           | 100/50    | 100/50    |

\* Some weights may differ due to the chosen optional.

| EXTRAS - ON DEMAND                            | STD | E  | ED |
|---|-----|----|----|
| Non-marking tracks for delicate surfaces      | •   | -- | •  |
| Electric emergency descent kit 24Vdc          | •   | -- | -- |
| Basket working light                          |     | •  |    |
| Remote diagnostics and fleet management       |     | •  |    |
| Anticollision device fitted to the basket.    | •   | •  | •  |
| Over-sized nylon plates (40x40cm)             | •   | •  | •  |
| Biodegradable oil                             | •   | •  | •  |
| Arctic lubricants for cold climate            | •   | -- | •  |
| Single man alu detachable basket (0,80x0,70m) |     | •  |    |
| Double drive speed slow/fast                  |     | •  |    |



**PLATFORM BASKET**  
Via Montessori, 1  
42028 Poggio - RE - Italy  
Tel. +39 0522 967666  
Fax +39 0522 967667  
info@platformbasket.com

