

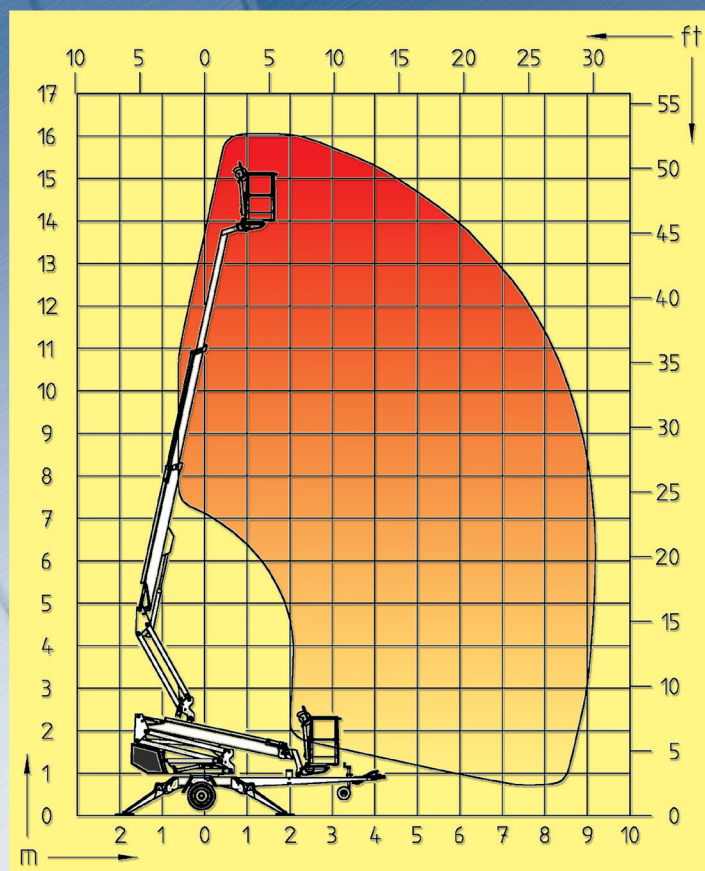
DINO 160XT

**Full Outreach
at Maximum Load**



DINO Lift®

DINO 160XT



TECHNICAL SPECIFICATION

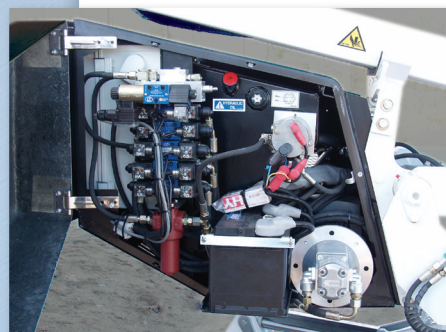
Working height	16.0 m	52'6"
Platform height	14.0 m	45'11"
Max. outreach	9.1 m	29'10"
Support width	3.8 m	12'6"
Lifting capacity	215 kg	474 lbs
Dimensions of the basket	0.7 x 1.3 m	2'4" x 4'3"
Boom rotation	continuous	continuous
Basket rotation	90°	90°
Boom control	proportional	proportional
Transport length	5.91 m	19'5"
Transport breadth	1.78 m	5'10"
Transport height	2.20 m	7'3"
Weight (without aggregate)	1950 kg	4300 lbs
Driving system	standard	standard
AC socket in the basket	standard	standard
Power supply	110 VAC / 230 VAC	110 VAC / 230 VAC
Gradeability	25%	25%
Aggregate (petrol/diesel)	optional	optional

The specification is subject to change without notice.

DINO® and Dino Lift® are trade marks registered by the company Dino Lift Oy.



Thanks to its explicit control panel the DINO 160XT is easy to use.



The servicing objects are easy to reach and well protected.



The DINO 160XT is short and easy to tow.

Full Outreach at Maximum Load

Manufacturer:

DINO Lift®

Dino Lift Oy
Raikkolantie 145, FI-32210 LOIMAA KK
tel. +358 2 76 25 900
fax +358 2 76 27 160
E-mail: dino@dinolift.com
www.dinolift.com